



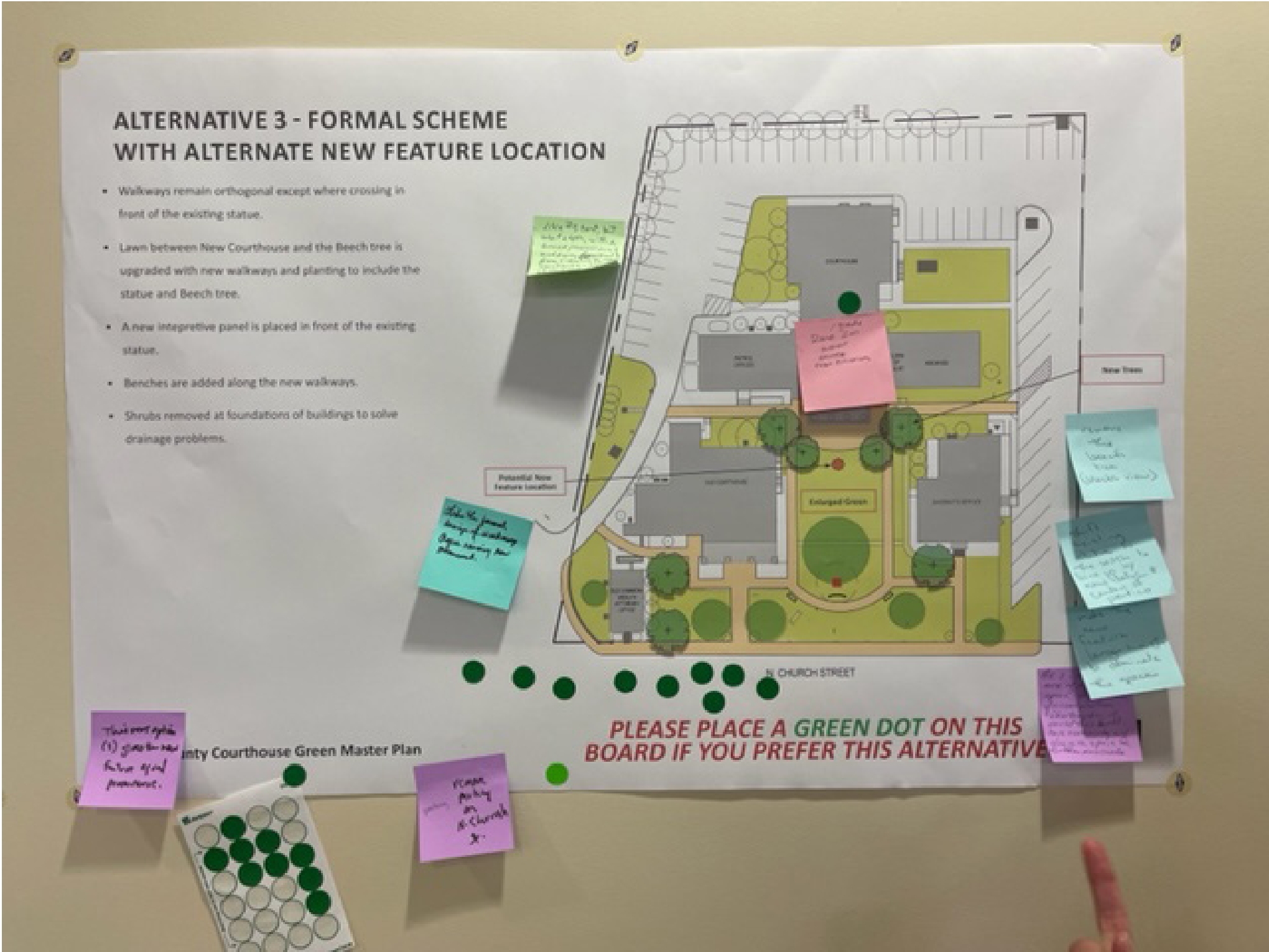
CLARKE COUNTY COURTHOUSE GREEN | MASTER PLAN

OPEN HOUSE #2
NOVEMBER 02 2022, 6:30 PM - 8:00 PM



OPEN HOUSE #1 - PREFERRED ALTERNATIVE #3

JULY 28, 2022



OBSERVATIONS:

- WALKWAYS REMAIN ORTHOGONAL EXCEPT WHERE CROSSING IN FRONT OF EXISTING STATUE.
- LAWN BETWEEN NEW COURTHOUSE AND THE EXISTING STATUE IS UPGRADED WITH NEW WALKWAYS AND PLANTING.
- AN INTERPRETIVE PANEL AND BENCHES ARE PLACED IN FRONT OF THE EXISTING STATUE.
- BENCHES ARE ADDED ALONG NEW WALKWAYS.
- SHRUBS ARE REMOVED AT FOUNDATIONS OF A NUMBER OF BUILDINGS TO HELP RESOLVE DRAINAGE PROBLEMS AND AESTHETIC CONCERNS.
- SEVERAL ATTENDEES SUGGESTED WE CONSIDER REMOVAL OF THE COPPER BEECH TREE ADJACENT TO THE EXISTING STATUE.

ILLUSTRATIVE SITE PLAN

A - OLD COURTHOUSE ENTRANCE, STEPS, AND PORTICO ENHANCED WITH NEW BLUESTONE PAVING

B - RELOCATED ACCESSIBLE RAMP

C - EXISTING STATUE ZONE, WITH CURVED BRICK WALKWAY, BENCHES, AND MEMORIAL INTERPRETIVE PANEL

D - NEW BENCHES AT MAIN ENTRANCE AND MAIN WALKWAYS

E - BUILDING FOUNDATION AND ENTRANCE AREAS PLANTED WITH LOW GROUNDCOVERS AND SPRING BULBS

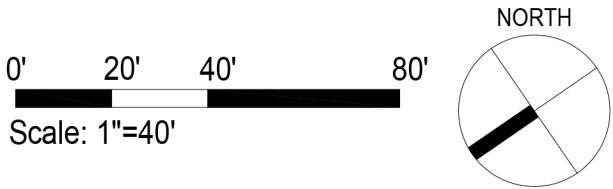
F - ENLARGED PLAZA AT NEW COURTHOUSE, RAISED TO ENTRANCE LEVEL, WITH AMPLE SPACE FOR SECOND FEATURE AND SURROUNDING CONTEXT

G - BEECH TREE AND PATH ARE REMOVED AND NEW TREES INSTALLED

H - NEW LOW BRICK WALLS TO ENABLE RAISING THE NEW COURTHOUSE PLAZA, WITH BIORETENTION PLANTERS AT BUILDING

I - ENHANCED PLANTING AT COMMUNITY GARDEN, WITH PATH TO ADJACENT CHURCH GROUNDS

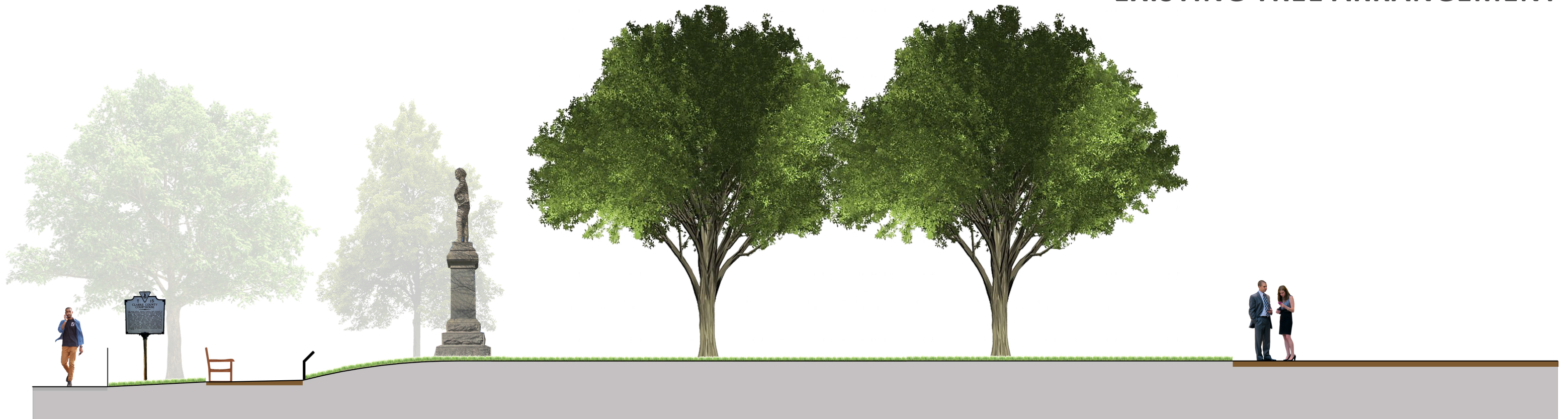
J - BIORETENTION PLANTER AT MAIN PARKING DRAIN INLET



ILLUSTRATIVE SITE SECTION

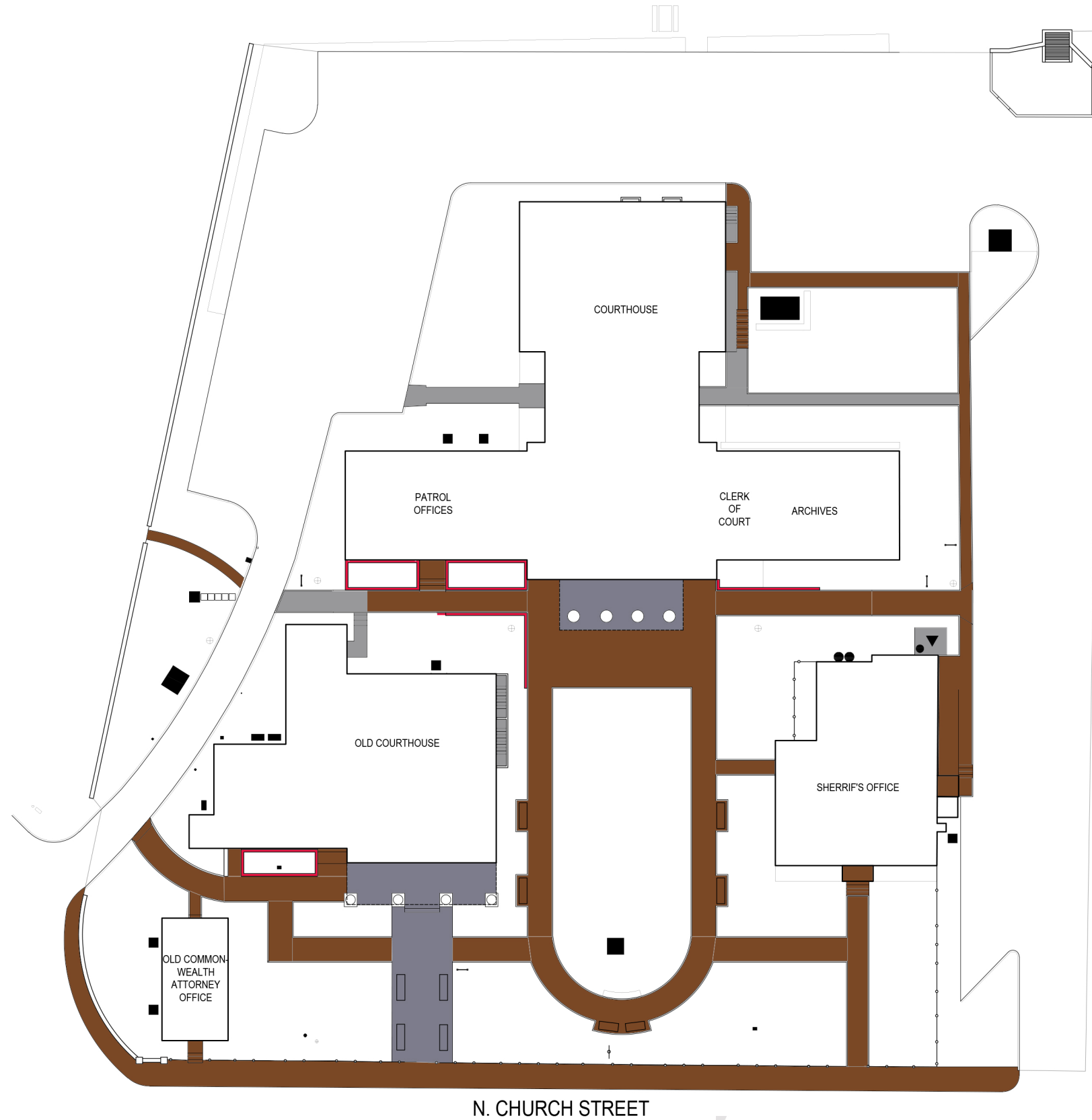


EXISTING TREE ARRANGEMENT



PROPOSED TREE ARRANGEMENT

PAVING AND WALLS



BLUESTONE PAVING



BRICK PAVING

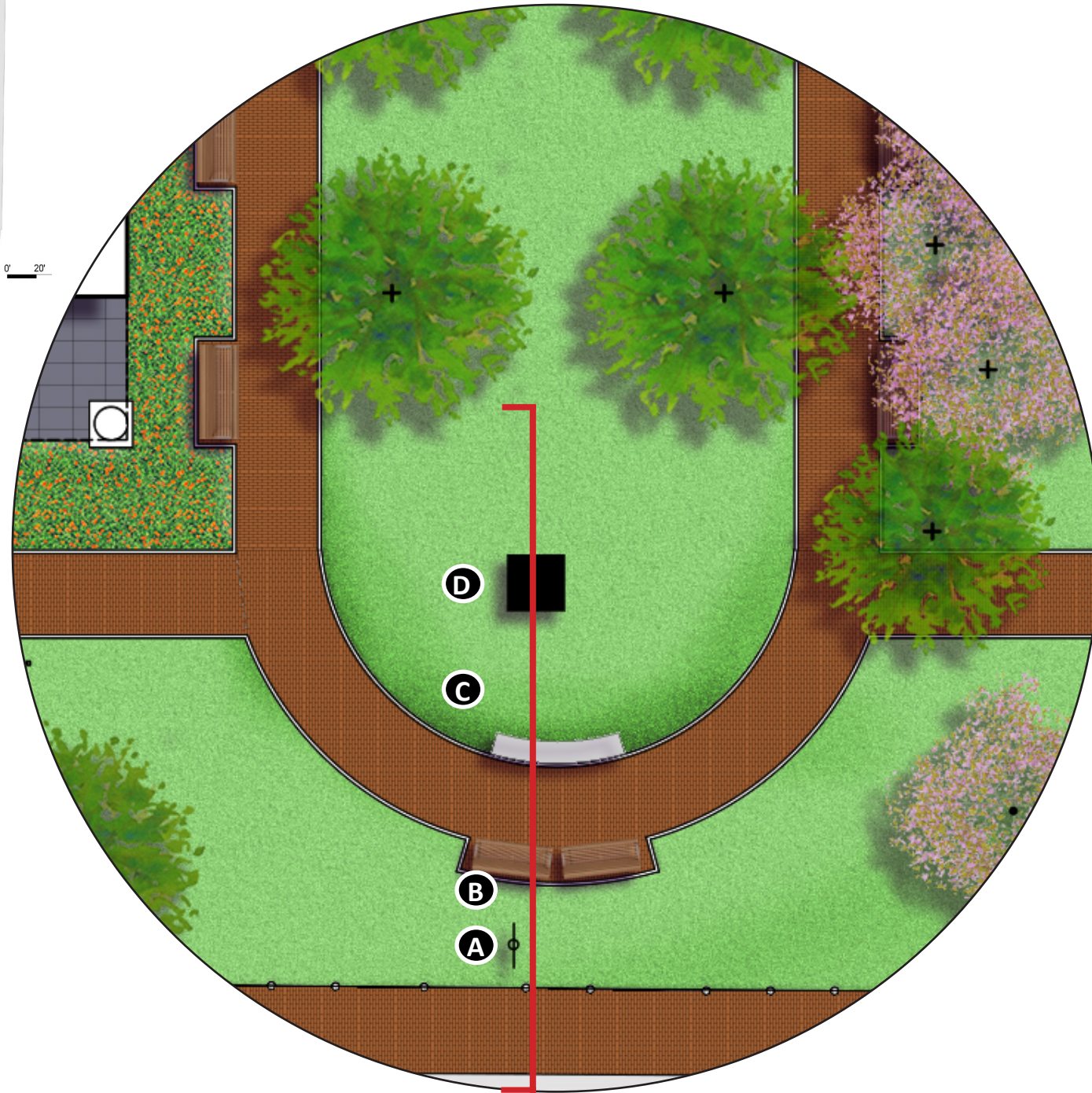


LOW BRICK WALLS



CONCRETE





EXISTING STATUE

- A - EXISTING HISTORIC MARKER
- B - NEW BENCHES
- C - NEW INTERPRETIVE SIGNAGE
- D - EXISTING STATUE



STATUE - PROPOSED SECTION



LOW FRAMED INTERPRETIVE PANEL, LEESBURG VA




USE ETCHED GLASS WITHIN FRAME FOR PANEL

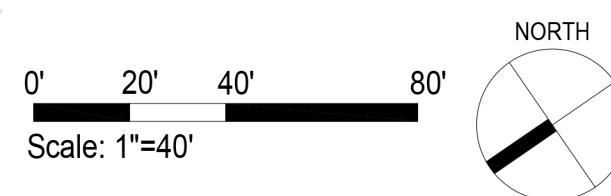
ADDITIONAL MONUMENT(S)

ABIDE BY MONUMENT COMMITTEE'S RECOMENDATIONS:

- THE EXISTING MONUMENT SHOULD NOT BE MOVED.
- COURTHOUSE GREEN SHOULD BE AN AREA DEDICATED TO BOTH MEMORIALS AND EDUCATION.
- ANY NEW MEMORIAL SHOULD FOCUS ON REMEMBERING THOSE WHO ALSO FOUGHT OR SUPPORTED THE UNION IN ORDER TO RECOGNIZE THE EFFORT OF CLARKE COUNTY'S AFRICAN-AMERICAN COMMUNITY.
- CONTEXTUALIZE CURRENT CONFEDERATE MONUMENT AND ADD SIGNAGE.



 STUDY AREA BOUNDARY FOR ADDITIONAL MONUMENT(S)



ADDITIONAL MONUMENT(S) PRECEDENTS



African American History Memorial, Austin TX



African American Civil War Memorial DC



UVA Student Remembrance Garden, Charlottesville VA



Bucks County WWII Memorial Garden, Doylestown PA



2nd Regiment Infantry Colored Troops, Ft. Myer FL



Emancipation and Freedom, Richmond VA



Revolutionary War Black Patriots, Washington D.C.

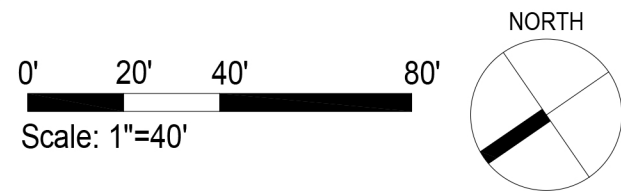


African American Soldiers, Vicksburg MS

PLANTING MATERIAL



- PRESERVED
- NEW
- TRANSPLANTED
- REMOVED



PLANTING MATERIAL

LARGE TREES

'PRINCETON' AMERICAN ELM



ULMUS AMERICANA 'PRINCETON'

SOUTHERN RED OAK



QUERCUS FALCATA

'PROMINENCE' SHUMARDS OAK



QUERCUS SHUMARDII 'PROMINENCE'

'AMERICAN SENTRY' LINDEN



TILIA AMERICANA 'MCKSENTRY'

'SUN VALLEY' RED MAPLE



ACER RUBRUM 'SUN VALLEY'

'CLAUDIA WANNAMAHER'
SOUTHERN MAGNOLIA



MAGNOLIA GRANDIFLORA
'CLAUDIA WANNAMAHER'

PLANTING MATERIAL

ORNAMENTAL TREES

'BEVERLY' CRABAPPLE



MALUS 'BEVERLY'

'APPALACHIAN RED' EASTERN REDBUD



CERCIS CANADENSIS 'APPALACHIAN RED'

'APPALACHIAN SPRING' DOGWOOD



CORNUS FLORIDA 'APPALACHIAN SPRING'

'ROYAL BURGUNDY' CHERRY



PRUNUS SERRULATA 'ROYAL BURGUNDY'

SHRUBS

DWARF FOTHERGILLA



FOTHERGILLA GARDENII

DWARF DOGHOBBLE



LEUCOTHOE 'SCARLETTA'

DWARF SOUTHERN WAX MYRTLE



MYRICA CERIFERA 'DONS DWARF'

DWARF FRAGRANT SUMAC



RHUS AROMATICA 'GRO LOW'

GROUND COVER WITH BULBS



EARLY SPRING BULBS IN GRASS



BULBS MIXED WITH OTHER GROUNDCOVERS



WELCOME

Welcome back to this community Open House focused on the Clarke County Courthouse Green Master Plan!

This is the second of two community meetings intended to provide information and solicit your feedback on the current thinking about improvements to the Courthouse Green.

We incorporated your thoughts from the first meeting --- which focused on ideas for potential enhancements to the site --- and will be further discussing those ideas with you this evening.

Please spend some time browsing the boards around the room and **let us know your thoughts.**

CLARKE COUNTY COURTHOUSE GREEN | MASTER PLAN

OPEN HOUSE #2

NOVEMBER 2 2022, 6:30 PM - 8:00 PM

